

PRODUCT OVERVIEW  
Newton Flooring Membranes

NEWTON FLOORING PRODUCTS

---

**Newton 503 - M5**

Newton 503 with its 3mm stud, is a low profile cavity drain membrane ideal for specifications where floor height restrictions exist. Newton 503 provides a soft cushioning effect on the flooring above and is often preferred as the membrane when a timber floating floor is required. Suitable finishes are screed and timber flooring.

When Newton 503 is used as part of Newton System 500 it is essential that a Newton pumping system or a safe form of drainage is specified.



Newton 503

**Newton 508 - M1 & M2**

Newton 508 is the most commonly specified wall and floor membrane within Newton System 500 as shown in the image adjacent. At 0.6mm, the thickest 8mm membrane available in the UK, Newton 508 is extremely tough and durable with high impact and loading capabilities. Suitable finishes are screed and floating timber flooring.

When Newton 508 is used as part of Newton System 500 it is essential that a Newton pumping system or a safe form of drainage is specified.

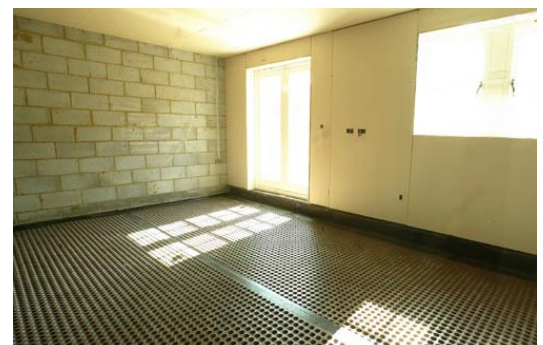


Newton 508

**Newton 520 - M4 & M13**

Newton 520 with its 20mm stud profile is usually specified when the slab or raft is of questionable quality and the concern is that water could pass through the concrete itself and not just at the cold joints in the structure. The recommended finish above Newton 520 is a 65mm sand / cement screed. For other finishing options or being considered, please contact John Newton.

When Newton 520 is used as part of Newton System 500 it is essential that a Newton pumping system or a safe form of drainage is specified.



Newton 520

PRODUCT OVERVIEW  
Newton Flooring Membranes

NEWTON FLOORING PRODUCTS

---

**Newton 501 Slimline - M6**

Newton 501 Slimline has a unique profile that allows the movement of vapour below the membrane. 501 Slimline is particularly useful when protecting sensitive flooring from dampness in new concrete as it can be laid as soon as the concrete floor is able to be walked upon. Suitable finishes are screed and floating timber flooring.

Newton 501 Slimline can be specified by a qualified waterproofing surveyor to be used as the flooring membrane within System 500. Newton 501 Slimline has a very high loading capability of over 1000 kN/m<sup>2</sup> and is often specified within System 500 as a loading DPM within internal load bearing walls.



Newton 501 Slimline

**Newton 503 Mesh - M11 & M12**

Newton 503 Mesh is ideally suited as a floating floor membrane when a bonded key is required for tiling, natural stone or paving, providing both a waterproofing membrane and a vapour pressure equalisation layer. Newton 503 provides separation between the floor and the floor covering, bridging stress cracks and other slight defects in the substrate so that they are not transferred to the floor covering above.

With the flat 3mm studs filled with the tiling adhesive, the floor loading is transferred through the studs to an area of approximately 60% of the floor area above.



Newton 503 Mesh

**Newton 503 Floor Tile - M7**

Newton 503 Floor Tile the sister product to Newton 503 Mesh, has an additional anchoring fleece to the studded side for bonding the membrane to the substrate.

When adhered with Newton Floor Tile Adhesive, Newton 503 Floor Tile provides a fully bonded water and vapour proof membrane with superb soundproofing and cushioning properties. Suitable finishes are tile, stone and paved flooring.

Newton 503 Floor Tile can be specified by a qualified waterproofing surveyor to be used as the flooring membrane within System 500.



Newton 503 Floor Tile